

ART 2650
Introduction to Design Process and Programming
Fall 2020
M, W 10:00-11:20
Online
Professor: Matthew Ziff

How To Design An Interior Wall/Partition

How To Design An Interior Wall/Partition

- Interior walls often do not have to bear any weight other than the weight of the wall itself.
- Such a wall is sometimes called a 'partition'.
- Such walls play a big role in most interiors.
- Walls are what define our spaces.
- Walls are what we see, in 'elevation', as we move through interior environments.

Interior Walls Must Present Some Interesting Attribute(s)

- Interior walls need to be interesting physical and visual elements.
- Since they play such a large role in our interior experiences they should be thoroughly, and well, designed.
- What is a 'well designed' wall?

From a professional designer's point of view a well designed wall
should

Express Both Visual and Functional Attributes

An interior wall should contain:

A base

A middle

A top

I 'Googled' 'Well Designed Interior Walls' for the following
images.

Articulated use of material and form



A base, a middle, a small reveal/detail at the top



Strong use of material contrasts



A base, strong middle, and unifying color



Articulated use of form, color



Articulated use of material and color



Base, middle, top



Strong geometry, strong color contrast



Strong pattern and texture combined with 'grazing' light.
Note the base condition.



Strong but subtle base: note the 'reveal'



Strong material presence but the overall surface/wall becomes dull from too much without pattern or articulated areas.
Where would you divide, 'panelize' the stone wall?



High level of 'sameness', coherence, but you would really have to love the wood. Needs some 'difference', variety



The wall becomes the ceiling!
Think about that as a design concept.



Strong material and color contrast



Vibrant color, minimal but important base to the wall, flat, un-articulated expanse of wall surface results in a feeling of smooth, minimal quiet. However, too much of this kind of surface treatment becomes dull and anonymous.



Strong use of material in a novel, or unexpected, way



Notice the base, reveal, and top of the walls



Notice the 'toe kick' base/reveal: notice the horizontal alignment of the window head, refrigerator top



A 'living wall' brings variety, oxygen, and that quality that only living natural plants can bring to an experience.



An articulated and well thought out wall, BUT the overall aesthetic, and cultural reference, is old, conservative, stodgy, and to today's design world, dull!



Strong use of color, alignment of horizontal panels with shelves



Strong, forceful, permanent materials, color contrasts



Unusual, innovative, use of plywood



Material presence and innovation



'Panelized' interior wall

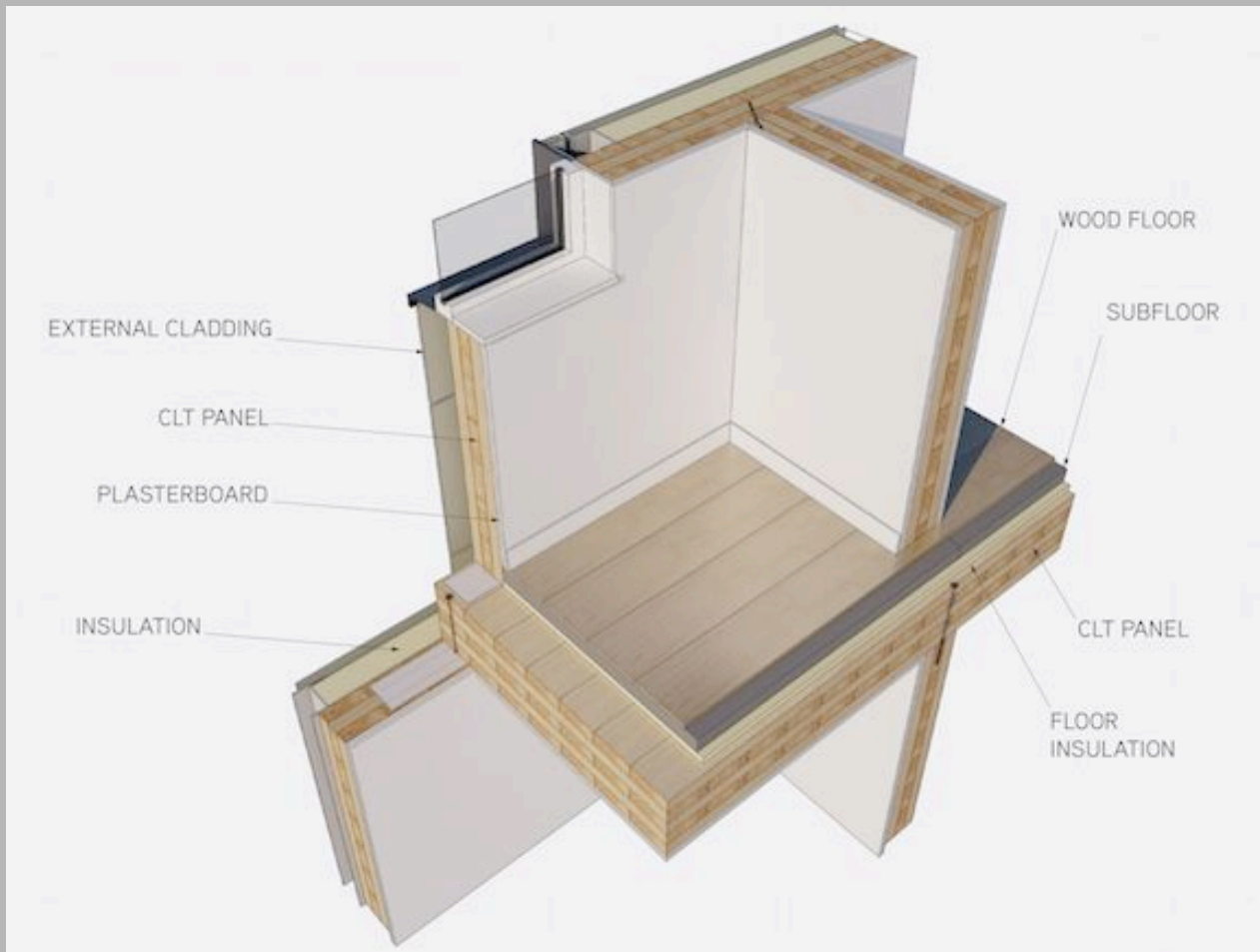
It has been divided, visually and constructionally, into distinct panels



The panels, grid, make the form and the surfaces of this volume stand out even more than it would without the grid



Cross Laminated Timber: Walls, Floors



Cross Laminated Timber

